



FT Trims

Recessed Trims for use with FH-VC6 & FH-HC6 Recessed housings

The Palette Recessed Downlights include a selection of trims to complement most interior environments. Available are two distinct Palette models with a solid drop disc and a drop disc with center hole. Also offered are standard reflector and baffle trims to round out our recessed trim offering.

Style	Reflector	Trim Ring	Palette Disc
PT-H640 = Reflector w/ Palette Drop Disc 1 x 42W TTT max. 2 x 26W DTT max.	CL = Clear WH = White	WH = White Metal	See table below for panel options Example: "PT01" or "PT12"

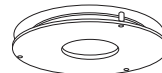
Style	Reflector	Trim Ring	Palette Disc
PT-H650 = Reflector w/ Palette Drop Disc & Center Hole 1 x 42W TTT max. 2 x 26W DTT max.	CL = Clear WH = White	WH = White Metal	See table below for panel options Example: "PT01" or "PT12"



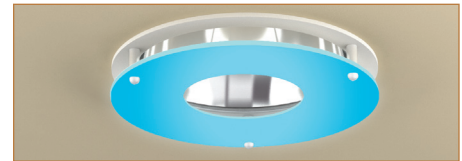
O.D. 7.875"



Example: PT-H640-CL-WH-PT01



O.D. 7.875"



Example: PT-H650-CL-WH-PT14

White Rose (PT01)	Red Carnation (PT02)	Poppy (PT03)	Camellia (PT04)	Pumpkin (PT05)	Tiger Lily (PT06)
Daffodil (PT07)	Lily (PT08)	Marigold (PT09)	Bamboo (PT10)	Agave (PT11)	Aqua Tower (PT12)
Cornflower Blue (PT13)	Eucalyptus (PT14)	Blue Cactus (PT15)	Dark Blue Iris (PT16)	Grape Hyacinth (PT17)	Peony (PT18)



LED Light Source Available.
Consult Factory for Details.

Style	Reflector	Trim Ring
FT-H64 = Full Open Reflector 1 x 42W TTT max. 2 x 26W DTT max.	CL = Clear WH = White HZ = Clear Haze	WP = White Plastic WH = White Metal

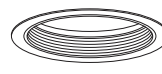


O.D. 7.875"

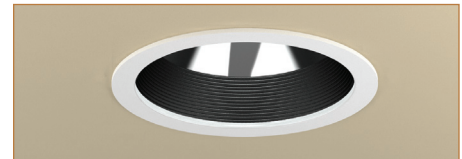


Example: FT-H64-CL-WH

Style	Baffle	Trim Ring
FT-H614 = Clear Reflector w/ Baffle 1 x 42W TTT max. 2 x 26W DTT max.	BK = Black WH = White	WP = White Plastic WH = White Metal



O.D. 7.875"



Example: FT-H614-BK-WH

Style	Reflector	Trim Ring
FT-H646 = Reflector Wall Wash 1 x 42W TTT max. 2 x 26W DTT max.	BK = Black CL = Clear WH = White	WP = White Plastic WH = White Metal



O.D. 7.875"



Example: FT-H646-CL-WH

All trims are damp location listed.

See page 52-53 for recessed housing details and ordering.

FH-VC6 6" Recessed Housing for use with ELEMENTS and PALETTE Trims for Vertically Mounted Compact Fluorescent Lamp NON-IC Flat Frame-In-Kit

Recessed 6" aperture flat frame-in kits for (1) vertical CFL lamps. These are designed for use in non-insulated ceilings for general and task lighting. Heat sink aluminium socket housing, with vertically adjustable lamp holder may produce various focuses for different lamp types.

Mounting Frame

Galvanized steel construction. Housing adjusts for ceilings up to 1.25" thick.

Junction Box

Listed for through branch circuit wiring. (Max.8 No 12 AWG 90° branch circuit conductors (4 in, 4 out)). (5)1/2" knockouts with true pry-out slots and (4) knockouts with Romex cable lamp. Ground wire provided on J-box.



Reflector

Anodized clear, haze, gold, champagne, pewter color finished full aluminum reflectors.

Bar Hangers

24" Bar Hangers provide stability and support on joists and T-Bar Grid ceilings. Housing can be positioned at any point within 24" joist span. Score lines allow "toolless" shortening for 12" joists Bar hangers may be repositioned 90°. Integral T-bar clips snaps onto T-bars-no additional clips required.

Listing

 C-UL I listed for damp location.
 C-UL listed for feed through.

Trim Ring

White plastic ring or plated chrome, satin nickel, natural steel color ring. **See following page for trim selection.**

Lamp Holder

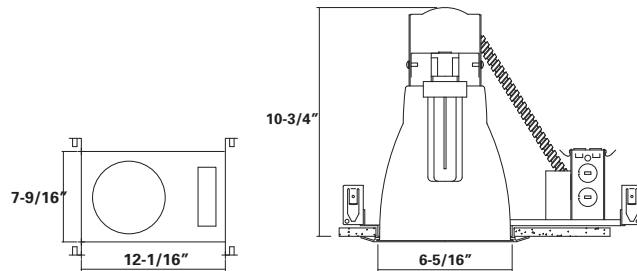
G24D/GX24Q socket for use 4 pin DTT, TTT lamps. Heat sink aluminum cup with vertically adjustable lampholder is used to control multiple beam spreads.

Ballast

Class P Thermally protected by internal fuse (3 amp fast blow), Multi-volt electronic ballast or thermal cut-out switch in magnetic ballast. High Power Factor Multi-volt Electronic ballasts for 4 pin type compact fluorescent lamps mounted on J-box door for easy access form inside of fixture.



Example : FH-VC6113HE-EM



Ceiling Cut-out : 6-1/2"

Lamp, Max, Watt. / Ballast : Electronic HPF 120 / 277V Max. 57W (4Pin)

Lamp

Compact, Fluorescent lamps.

DTT-Double twin tube (Quad/CFQ)

(1) 13W DTT (4 pin)

(1) 18W DTT (4 pin)

(1) 26W DTT (4 pin)

TTT-Triple Twin Tube (CFTR)

(1) 26W TTT (4 pin)

(1) 18W TTT (4 pin)

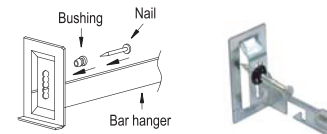
(1) 32W TTT (4 pin)

(1) 42W TTT (4 pin)

(1) 57W TTT (4 pin)

Optional "Just-A-Nail"

Adjustable nail hanger bar for easy alignment.



Pre-installed nailer bars with vertical slots for adjustable height to align the bars horizontally after nailing half way into wood joists.

Optional "Quick Connect"

Three "Quick connectors" - Pre-installed push-in wire connectors for very fast and easy wiring.

Housing	Lamp / Wattage	Ballast	Option
FH-VC6 = 6" Vertical Compact Fluorescent Housing	113 = One 13W Lamp 118 = One 18W Lamp 126 = One 26W Lamp 132 = One 32W Lamp 142 = One 42W Lamp 157 = One 57W Lamp	NE = NPF Electronic(120V) HE = HPF Electronic(120/277V) HED1 = Mark 10 Dimming (120V) HED2 = Mark 10 Dimming (277V) HELD1 = Lutron Compact SE (120V) HELD2 = Lutron Compact SE (277V)	HELHD1 = 1% Lutron Hi-Lume (120V) HELHD2 = 1% Lutron Hi-Lume (277V) *Other Dimming Products Available. Consult With Factory. *1% Lutron Hi-Lume Limited Use For (1)26W & (1)32W TTT.
			EM = Emergency w/ Remote Test Switch JAN = Just-A-Nail Hanger Bars



FH-HC6

6" Recessed Housing for use with ELEMENTS and PALETTE Trims for Horizontally Mounted Compact Fluorescent Lamp NON-IC Flat Frame-In-Kit

The FH-HC6 is a 6" aperture flat frame-in kit for (1) or (2) horizontal CFL lamps, for wide beam area and task lighting. The FH-HC6 offers a wide choice of trim types including reflector, lensed and wall wash trims.

Mounting Frame

Galvanized steel construction. Housing adjusts for ceilings up to 1.25" thick.

Junction Box

Listed for through branch circuit wiring. (Max.8 No 12 AWG 90° branch circuit conductions (4 in, 4 out)). (5)1/2" knockouts with true pry-out slots and (4) knockouts with Romex cable lamp. Ground wire provided on J-box.

Reflector

Anodized clear, haze, gold, champagne, pewter color finished full aluminum reflectors.

Bar Hangers

24" Bar Hangers provide stability and support on joists and T-Bar Grid ceilings. Housing can be positioned at any point within 24" joist span. Score lines allow "toolless" shortening for 12" joists Bar hangers may be repositioned 90°. Integral T-bar clips snaps onto T-bars-no additional clips required.

Listing

C-UL I listed for damp location.
 C-UL listed for feed through.

Trim Ring

White plastic ring or plated chrome, satin nickel, natural steel color ring. *See following page for trim selection.*

Lamp Holder

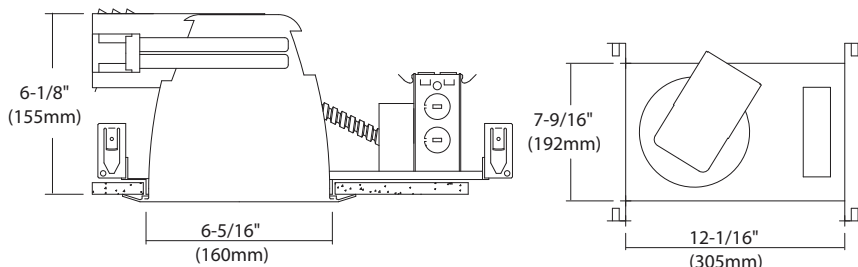
G24D/GX24Q socket for use 4 pin DTT, TTT lamps. Installed (4 pin) plastic lampholders in stamped galvanized steel housing attached on the reflector top.

Ballast

Class P Thermally protected by internal fuse (3 amp fast blow), Multi-volt electronic ballast or thermal cut-out switch in magnetic ballast. High Power Factor Multi-volt Electronic ballasts for 4 pin type compact fluorescent lamps mounted on J-box door for easy access form inside of fixture.



Example : FH-HC6113HE-EM



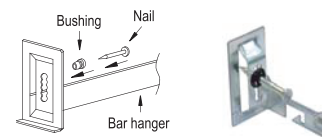
Ceiling Cut-out : 6-1/2"
Lamp, Max, Watt. : (1)42W or (2)26W

Lamp

- Compact, Fluorescent lamps.
- DTT-Double twin tube (Quad/CFQ)
 - (2) 13W DTT (4 pin)
 - (2) 18W DTT (4 pin)
 - (2) 26W DTT (4 pin)
- TTT-Triple Twin Tube (CFTR)
 - (1) 13W TTT (4 pin)
 - (1) 18W TTT (4 pin)
 - (1) 26W TTT (4 pin)
 - (1) 32W TTT (4 pin)
 - (1) 42W TTT (4 pin)

Optional "Just-A-Nail"

Adjustable nail hanger bar for easy alignment.



Pre-installed nailer bars with vertical slots for adjustable height to align the bars horizontally after nailing half way into wood joists.

Optional "Quick Connect"

Three "Quick connectors" - Pre-installed push-in wire connectors for very fast and easy wiring.

Housing	Lamp / Wattage	Ballast	Option
FH-HC6 = 6" Horizontal Compact Fluorescent Housing	113 = One 13W Lamp 118 = One 18W Lamp 126 = One 26W Lamp 132 = One 32W Lamp 142 = One 42W Lamp 213 = Two 13W Lamp 218 = Two 18W Lamp 226 = Two 26W Lamp	NE = NPF Electronic(120V) HE = HPF Electronic(120/277V) HED1 = Mark 10 Dimming (120V) HED2 = Mark 10 Dimming (277V) HELD1 = Lutron Compact SE (120V) HELD2 = Lutron Compact SE (277V)	HELHD1 = 1% Lutron Hi-Lume (120V) HELHD2 = 1% Lutron Hi-Lume (277V) *Other Dimming Products Available. Consult With Factory. *1% Lutron Hi-Lume Limited Use For (1)26W & (1)32W TTT.
			EM = Emergency w/ Remote Test Switch JAN = Just-A-Nail Hanger Bars